

COMPANY ANNOUNCEMENT

Spring & Mulberry Expands Voluntary Recall of Select Chocolate Bars Because of Possible Health Risk

When a company announces a recall, market withdrawal, or safety alert, the FDA posts the company's announcement as a public service. FDA does not endorse either the product or the company.

[Read Announcement](#)

[View Product Photos](#)

[↶ More Recalls, Market Withdrawals, & Safety Alerts \(/safety/recalls-market-withdrawals-safety-alerts\)](#)

Feedback

Summary

Company Announcement Date:

May 08, 2026

FDA Publish Date:

May 08, 2026

Product Type:

Food & Beverages

Foodborne Illness

Reason for Announcement:

Potential to be contaminated with Salmonella

Company Name:

Spring & Mulberry

Brand Name:

Spring & Mulberry

Product Description:

Chocolate bars

Company Announcement

RALEIGH, NC, UNITED STATES, May 8, 2026 -- Spring & Mulberry is voluntarily expanding its previously announced recall of select chocolate bars due to possible contamination from *Salmonella*.

This expansion follows a comprehensive root cause investigation conducted by the company's manufacturing partners in coordination with leading food safety experts and the U.S. Food and Drug Administration. The investigation has now identified a single lot of date ingredient used in the production of the company's chocolate as the most likely source of contamination.

In response, Spring & Mulberry is recalling all finished products produced with the implicated lot of date ingredient. All products included in this expanded recall have tested negative for *Salmonella*, and there have been no confirmed reports of illness associated with the chocolate bars referenced below, to date. This announcement follows a recall by the company's supplier.

Salmonella is an organism which can cause serious and sometimes fatal infections in young children, frail or elderly people, and others with weakened immune systems. Healthy individuals infected with *Salmonella* may experience fever, diarrhea (which may be bloody), nausea, vomiting, and abdominal pain. In rare circumstances, infection with *Salmonella* can result in more serious illnesses.

The affected products were available for purchase online and through select retail partners nationwide since August 2025. The recalled products can be identified by brand name (Spring & Mulberry), with the following identifiers: flavor name, lot/batch codes, and box color. The lot code is listed on the back of the packaging and inner flow wrap.

Consumers who have purchased any of the affected products are urged not to consume them. To receive a refund, consumers should take a photo of the product packaging showing the batch code and email it to recalls@springandmulberry.com (<mailto:recalls@springandmulberry.com>). After documenting the batch code, consumers should dispose of the product immediately.

Spring & Mulberry takes the safety and quality of its products extremely seriously. Consumers with questions may contact the company at recalls@springandmulberry.com (<mailto:recalls@springandmulberry.com>). Customer service will respond during business hours Monday-Friday 9am-5pm Eastern Standard Time.

Kathryn Shah
Spring & Mulberry

Product Name	UPC	Batch/Lot Code	Box Color
Blood Orange	850055470200	025217, 025289, 025325	Orange
Coffee	850055470224	025226, 025274, 025344	Lt. Brown
Earl Grey	850055470231	025346	Purple
Lavender Rose	850055470019	025204, 025205, 025212, 025216, 026037, 026040	Lt. Blue
Mango Chili	850055470033	025245, 025322, 025328	Orange
Mint Leaf	850055470217	025225, 025272, 025342, 025364	Green
Mixed Berry	850055470026	025220, 025223, 025247, 025248, 025251, 025253, 025288, 025296, 025335, 026008	Purple
Mulberry Fennel	850055470149	025230, 025287	Burgundy
Pecan Date	850055470040	025233, 025237, 025238, 025239, 025240, 025241, 025290, 025294, 025329, 025330	Yellow
Pure Dark	850055470002	025217, 025218, 025219, 025254, 025266, 025269, 025324, 025338, 025350	Navy Blue
Pure Dark Mini	850055470132	025302, 025303, 026009	Navy Blue
Sea Salt	850055470217	026013, 026014	Grey

Link to [Initial Press Release \(https://www.fda.gov/safety/recalls-market-withdrawals-safety-alerts/spring-mulberry-expands-voluntary-recall-select-chocolate-bars-due-possible-salmonella-contamination\)](https://www.fda.gov/safety/recalls-market-withdrawals-safety-alerts/spring-mulberry-expands-voluntary-recall-select-chocolate-bars-due-possible-salmonella-contamination).

Company Contact Information

Consumers:

✉ recalls@springandmulberry.com (mailto:recalls@springandmulberry.com)

Product Photos

Pure Dark

SALE - 100% DARK CHOCOLATE

80%
C
N
B
D
R
E
F
E
R
E
N
C
E



Pure Dark

DATE-SHEETED CHOCOLATE





Blood Orange

DATE-SWEETENED CHOCOLATE

DRINK BERRY

1770-1780
1780-1790
1790-1800
1800-1810
1810-1820

1770-1780
1780-1790
1790-1800
1800-1810
1810-1820

1770-1780
1780-1790
1790-1800
1800-1810
1810-1820

Mint Leaf

DATE-SWEETENED CHOCOLATE



790
7270
CICERO
NO. 1 ST
A. 1902 1904

SPAIN

Sea Salt

DATE-SWEETENED CHOCOLATE

NOVEMBER



Earl Grey

DATE-TASTED CHOCOLATE



THE
MUSEUM
OF
ART AND
ARCHITECTURE

BLIND

THE MUSEUM OF ART AND ARCHITECTURE
BLIND

Coffee

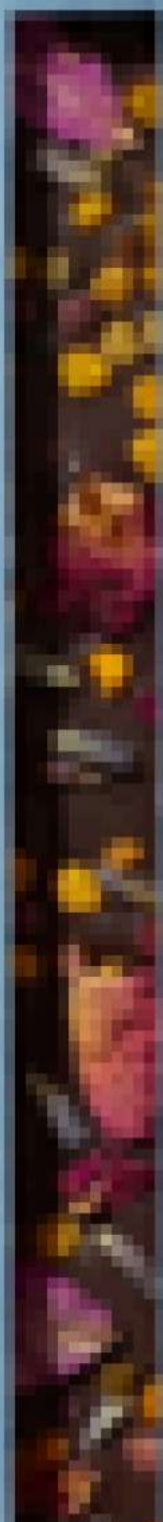
DATE-SWEETENED CHOCOLATE



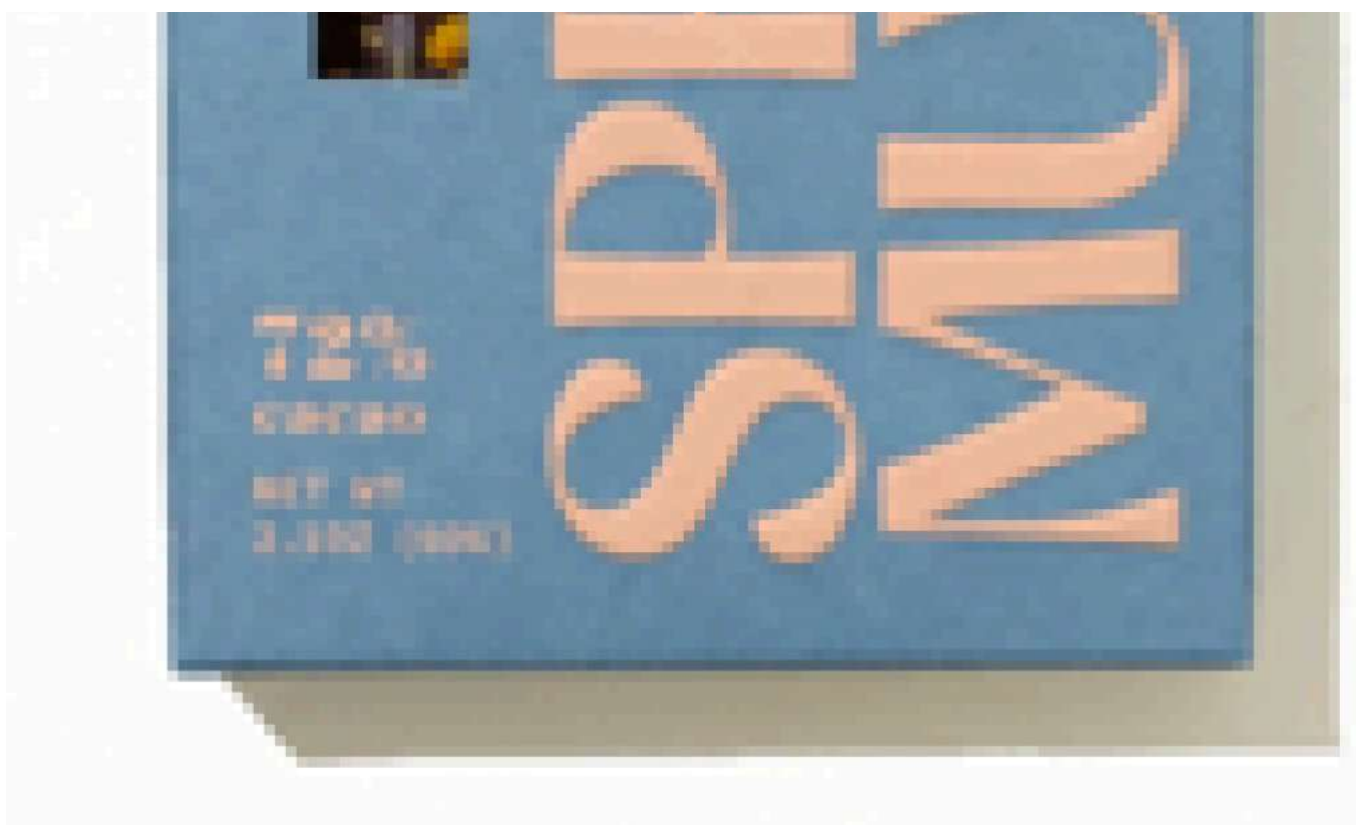


Lavender Rose

DATE-SWEETENED CHOCOLATE



CHOCOLATE
SWEETENED
DATE



Pecan Date

DATE-SWEETENED CHOCOLATE



7
INGREDIENTS



THE SIN SIN

THE HISTORY
OF THE
COUNTRY
AND THE
LANDS

Mixed Berry

DATE-SWEETENED CHOCOLATE



7%
BIBER
BIBER
BIBER
BIBER



THE
ART OF
THE
MIND
BY
D. J. V. [unreadable]

SPIN

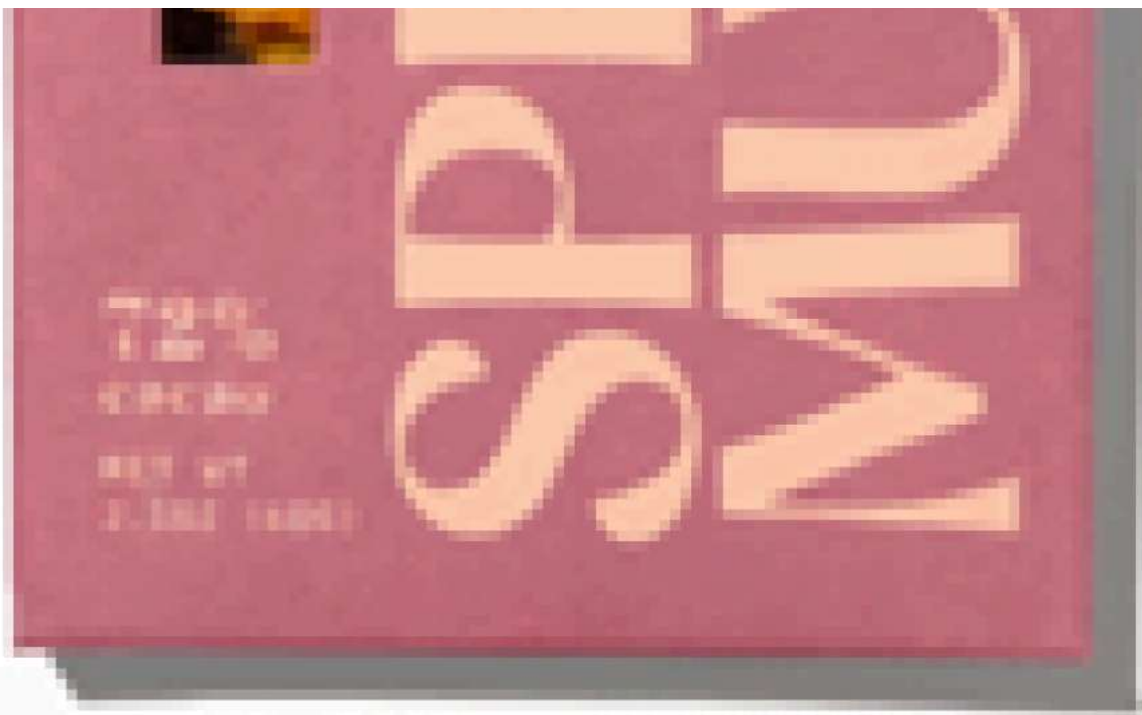
Mango Chili

gate-talithelo chocolate



MADE WITH
REAL
INGREDIENTS

MADE WITH REAL INGREDIENTS



Book cover: <https://www.amazon.com/Sin-Sin-Magnetic-Books-Children/dp/1602622111>

Mulberry Fennel

DATE-SWEETENED CHOCOLATE



BRING
HOME
THE
BEST





Welcome to the kind of Spring & Mulberry.
 We're exploring a world of sweet
 beyond sugar, using fantastic-for-you
 ingredients that showcase a depth
 of flavor and spectrum of sweetness.
 Our chocolate's sweetened with only
 dates... a nutrient-dense and
 fiber-rich fruit high in antioxidants.

INGREDIENTS

Cacao Beans*
Dates*
Cacao Butter*

*ORGANIC

72% CACAO

10g of sugar

NO ADDED SUGAR

100% a low-calorie sweet

NUTRITION FACTS Servings: 2; Serv. Size:
 1/2 BAR (30g), **Amount Per Serving:**
 Calories 160, Total Fat 13g (17% DV), Sat.
 Fat 8g (40% DV), Trans Fat 0g, Cholest.
 0g (0% DV), Sodium 0mg (0% DV), Total
 Carb. 13g (25% DV), Fiber 3g (12% DV)
 Total Sugars 8g (16%) 0g Added Sugars
 0% DV, Protein 2g (4% DV), Calcium
 12% DV, Iron 10% DV, Potas. (4% DV)

BAR CONTAINS 10% OF YOUR DAILY VALUE OF FIBER

BEST BY 1/06/2025

BATCH 1000



638074479009

@SPRING.MULBERRY

DIST. BY SPRING & MULBERRY RALEIGH, NC 27608
MADE IN THE USA

Was this page helpful? * (required)

Yes

No

Submit

 An official form of the United States government. Provided by [Touchpoints](#)